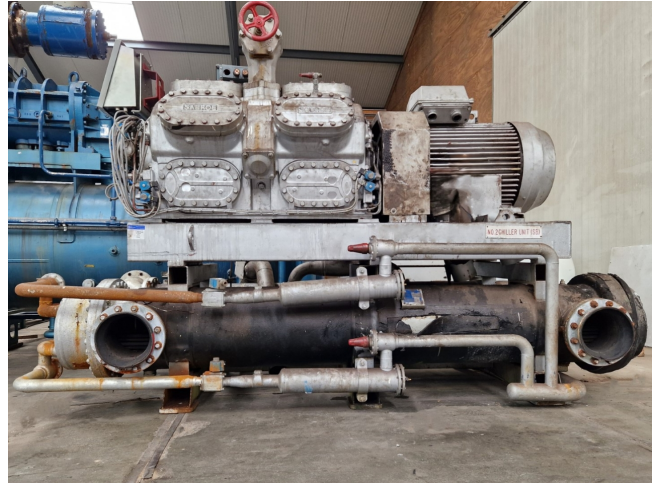


# Sabroe SMC 112 S Unit

## Specifications

Brand	Sabroe
Tipo	SMC 112 S Unit
Product type	Water Cooled Chiller
Capacidad kW	451 (+12°C/+6°C)
Capacity Tons	128,2
Refrigerante	Freon
Tipo de Refrigerante	R 404 A
Sizes	3320x1650x2130 mm (LxWxH)
Compressor(s) type & model	x1 Sabroe SMC 112 S
Display	Sabroe Unisab III
Remarks	Y.o.b. 2000
Stock	1



## Description

### Used Sabroe SMC 112 S Unit

Used Sabroe SMC 112 S Unit water-cooled chiller on Freon R404A. Complete with a Sabroe SMC 112 S reciprocating compressor with a ABB M2CA 315 SMA electro motor: 60 Hz - 150 kW - 1784 RPM, Sabroe EIKS 412714 shell and tube as evaporator with a volume of 184 L (Water) / 994 L (R404A), Sabroe shell and tube as condenser, pressure gauges and a Sabroe Unisab III control panel.  
\*All components of this used chiller will be tested on adequate performance, leak free condition (condensing blocks, compressors, fans, control panel and so forth). Choosing HOSBV means buying with warranty. We perform a industrial cleaning if requested we can arrange your shipment.

